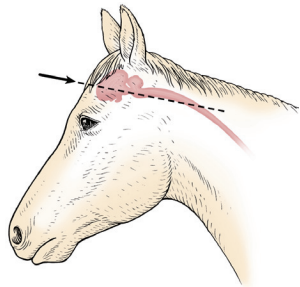
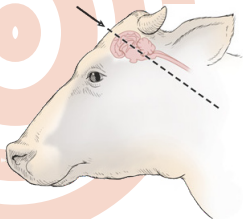
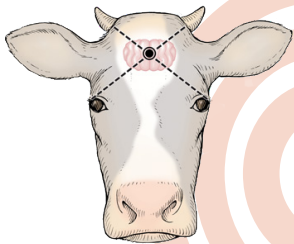
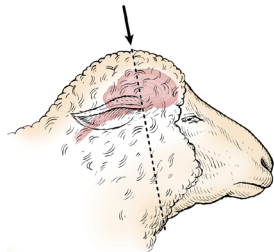
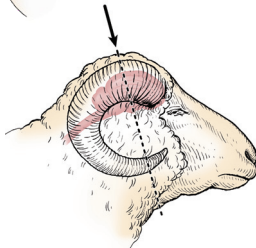
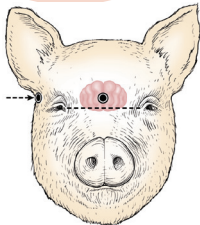
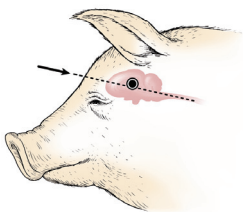


Anatomical Sites for Livestock Euthanasia



NOT BETWEEN THE EYES!
Above the eyes as illustrated



Firearm and Bullet/Shotshell Selection for Euthanasia of Livestock

Handguns and rifles - A .22 caliber rifle is sufficient for young animals, but results are not consistent in adult animals. A .22 magnum or larger caliber firearm is preferred.

Shotguns – A 12, 16 or 20 gauge are preferred loaded with slugs are best, but birdshot No. 2, 4, or 6 can be used.

Confirmation of Death

Regardless of the method of euthanasia used, death must be confirmed before disposal of the animal. The following should be used to evaluate consciousness or to confirm death.

1. Lack of a heartbeat
2. Lack of respiration
3. Lack of a corneal reflex
4. Presence of rigor mortis



IOWA STATE UNIVERSITY
University Extension

<http://vetmed.iastate.edu/HumaneEuthanasia>

